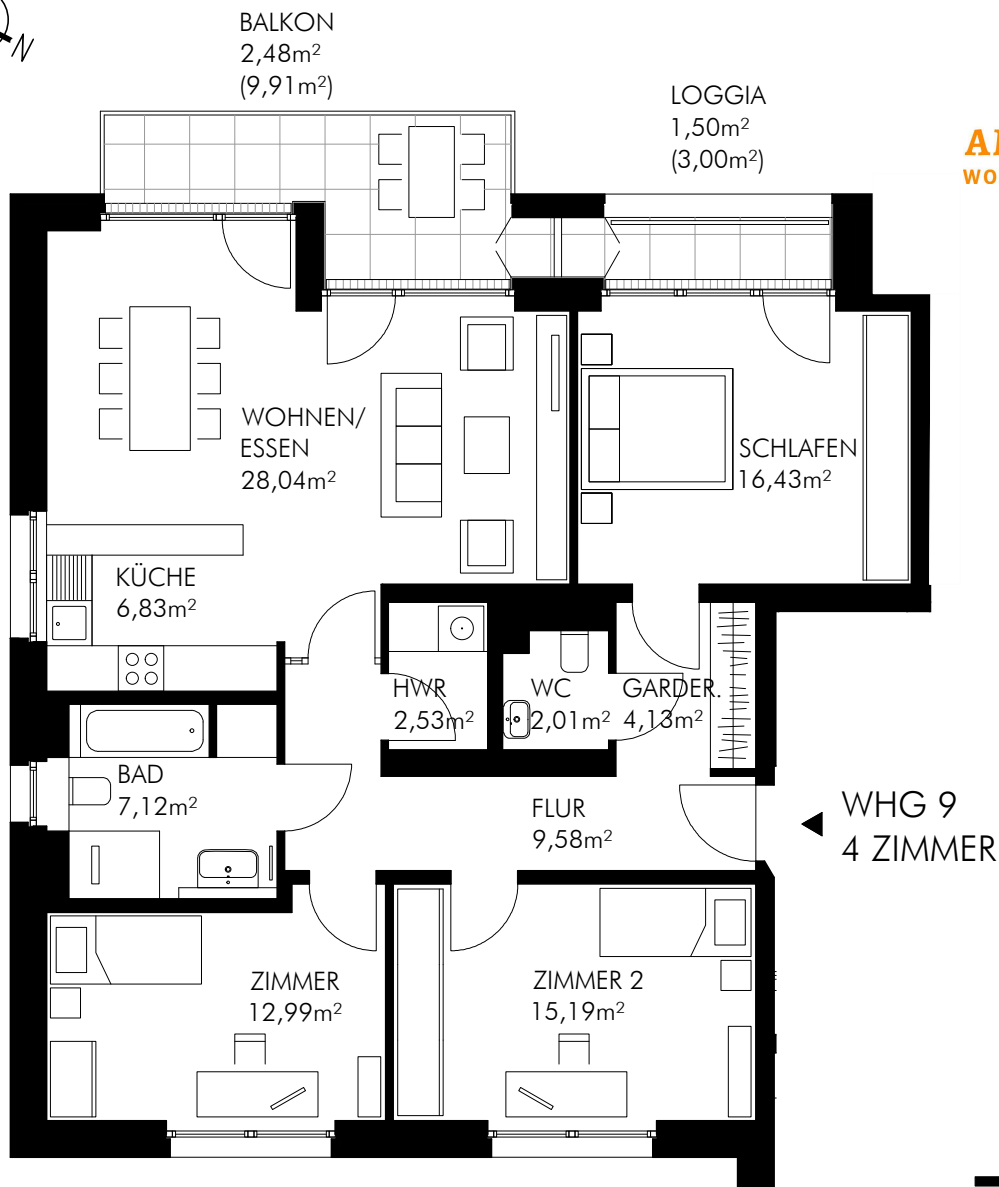
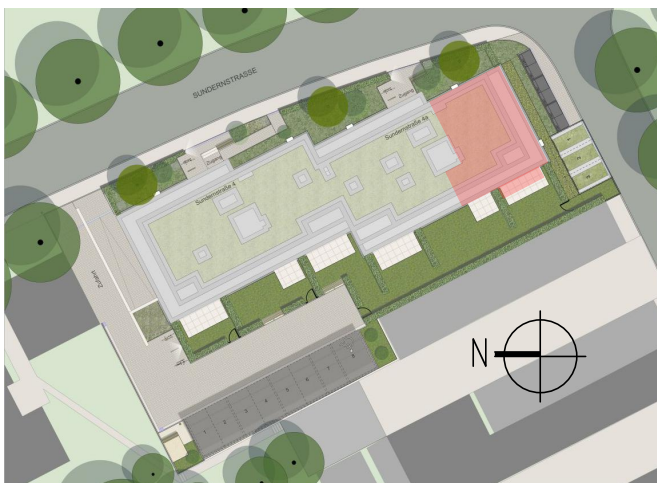


**AM SUNDERN**  
WOHNEN IN HEMMINGEN



SUNDERNSTRASSE 4a | WHG 9 | 3.OG



Wohnen/EsSEN	28,04 m <sup>2</sup>
Küche	6,83 m <sup>2</sup>
Schlafen	16,43 m <sup>2</sup>
Zimmer	12,99 m <sup>2</sup>
Zimmer 2	15,19 m <sup>2</sup>
Bad	7,12 m <sup>2</sup>
Flur	9,58 m <sup>2</sup>
Garderobe	4,13 m <sup>2</sup>
WC	2,01 m <sup>2</sup>
HWR	2,53 m <sup>2</sup>
Balkon (25%)	2,48 m <sup>2</sup>
Loggia (50%)	1,50 m <sup>2</sup>
<b>Gesamt</b>	<b>108,83 m<sup>2</sup></b>