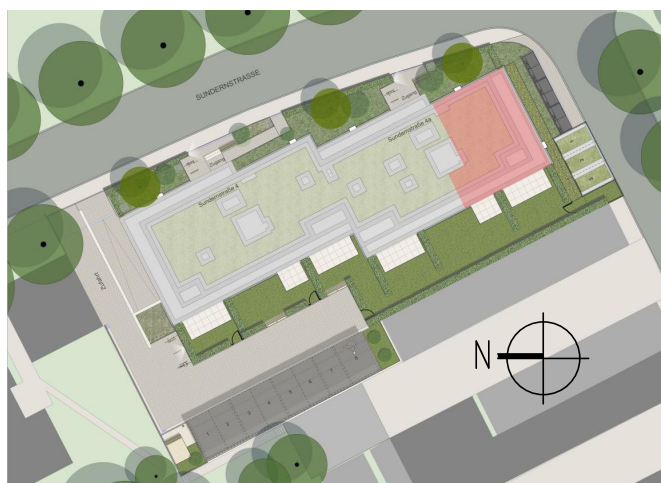
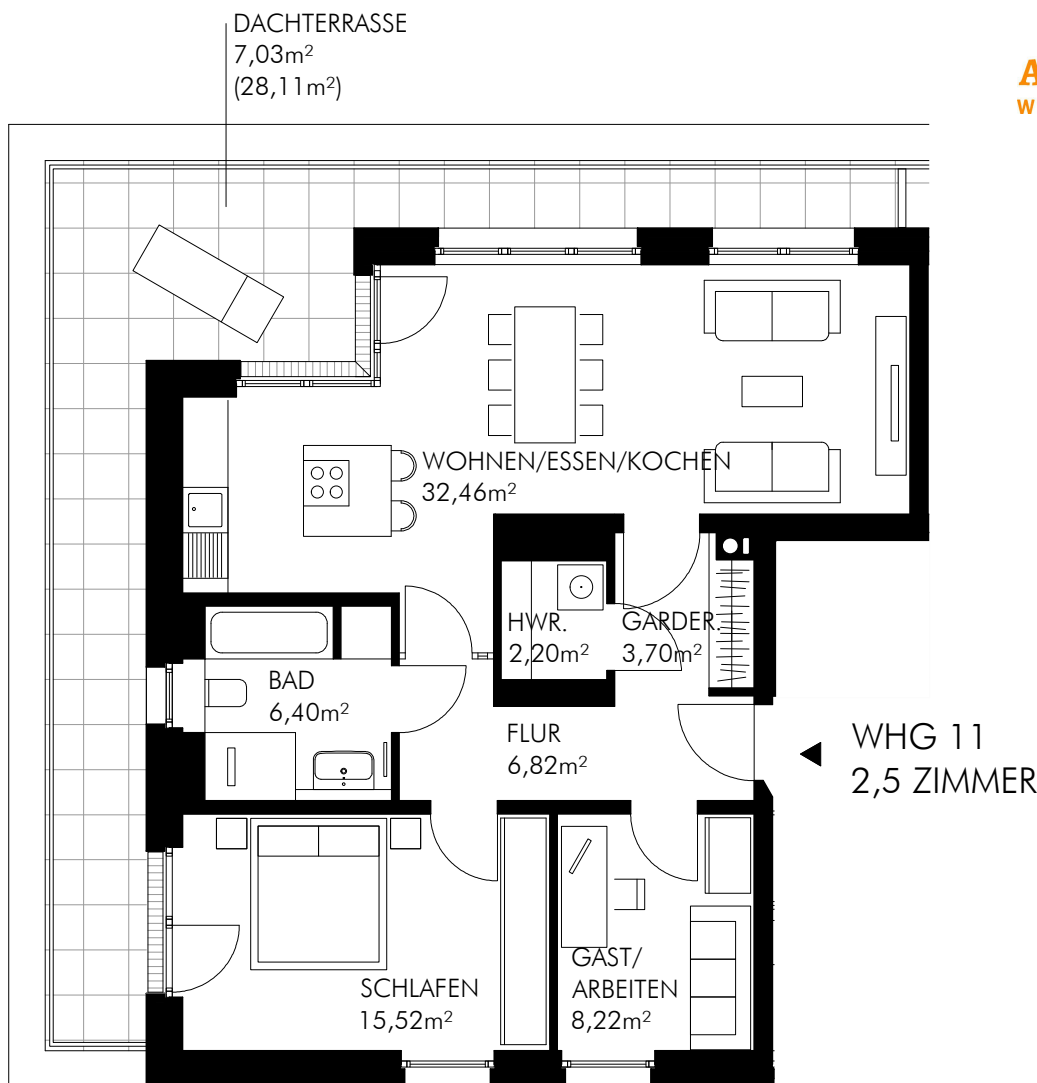




**AM SUNDERN**  
WOHNEN IN HEMMINGEN



SUNDERNSTRASSE 4a | WHG 11 | DG

Wohnen/Essen/Kochen	32,46 m <sup>2</sup>
Schlafen	15,52 m <sup>2</sup>
Gast/Arbeiten	8,22 m <sup>2</sup>
Bad	6,40 m <sup>2</sup>
Flur	6,82 m <sup>2</sup>
Garderobe	3,70 m <sup>2</sup>
HWR	2,20 m <sup>2</sup>
Dachterrasse (25%)	7,03 m <sup>2</sup>
<b>Gesamt</b>	<b>82,35 m<sup>2</sup></b>